

JHH ACCM GREEN REFERENCE CARD

BLUE TOWELS

- For sterile procedures only; not for cosmetic beauty!
- Recycle in **blue linens** bin, even if soiled.

PHARMACY RETURN BINS ARE FOR UNOPENED:

- vials
- compounded syringes
- boxed bristojets



***No** needles, used syringes/vials EVER.

CHOOSE YOUR MEDS WISELY!

- Refer to local administration patterns
- Use evidence-based guidelines (e.g., PONV ppx)
- Prepare drugs as needed, rather than “in case of emergency”
- Leave emergency drugs unopened but immediately available.

OR WASTE STREAMS

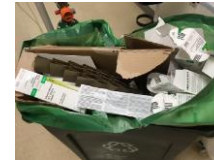
CLEAR BAGS:

- general waste
- USED** meds: glass vials, syringes, minibags



GREEN BAGS:

- paper and cardboard ONLY



BLUE BAGS:

- linens, blue towels



RED BAGS:

- blood bags, blood tubing, *saturated* gauze



SHARPS BINS

- Sharps **ONLY** (needles, scalpels, etc.).
- NO** syringes or med bags



EKG & PULSE-OX RECYCLING

Return bins in Pre-op & PACU!



LIMIT DESFLURANE!

- Choose an environmentally-friendly alternative.

